

PERFORMANCE SERIES UPRIGHT BIKE

Experience the ultimate in comfort and performance with TRUE's Performance Series Upright Bike. Ergonomic aero bars and armrests ensure maximum body control, power, and stability, allowing you to push your limits while keeping a compact footprint. Customize your ride with fore and aft seat adjustments for a truly personalized workout. With a sleek design and low step-over height, this bike is perfect for those seeking a realistic cycling experience.

FEATURES

- Achieve your perfect riding position with our Universal Seat Post, featuring fore and aft precision adjustments.
- Quiet and smooth operation for a no-hassle home gym experience.
- Compatible with FTMS including Zwift technology that allows users to virtually exercise around the world.
- TRUE's HRC[®] Cruise Control gradually increases or decreases resistance to maintain your target heart rate.

SPECIFICATIONS

DIMENSIONS (L X W X H)

44" x 24" x 58.5" / 111.76 cm x 60.96 cm x 148.59 cm

STEP-OVER HEIGHT

16.75" / 42.54 cm

CONSOLE OPTIONS



16" TOUCHSCREEN



10" TOUCHSCREEN



EMERGE LED



Telemetry Heart Rate Strap Included



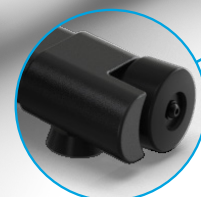
Compatible with Zwift technology



Fore and aft seat adjustments



Ergonomic aero bars and armrests



Easy portability with two front transparent wheels

45 YEARS

PERFORMANCE SERIES UPRIGHT BIKE

TECHNICAL SPECIFICATIONS	Power Source	110V/15A
	Cord Length	8' / 2.4 M
	Drive System	Single Stage Drive System with Poly-V Belts
	Crank	3-Piece Forged Steel Crank System with Sealed Bearings
	Resistance Source	Servo Motor
	Resistance Levels	25 (EMERGE LED), 30 (Touchscreens)
	Workload Range	25-350 Watts
	Frame Construction	Robotically Welded Heavy-Gauge Steel
	Pedals	Dual Sided and Weighted with Integrated Ratcheting Strap
	Seat	Full foam Stitched with Fore/Aft Seat Adjustments
	Handlebar Design	Multi-Position with Moisture Resistant Sleeves
	Contact Heart Rate Monitoring	Yes
	Wireless Heart Rate Monitoring	Polar® Compatible, (Bluetooth on Touchscreens)
	Connectivity	Direct Connection to 3rd Party FTMS Apps (Touchscreen Only)
SAFETY	Low Step Over Height	
REGULATORY APPROVALS	ETL UL1647, CSA	
EXTRAS	Accessories	Water Bottle Holder (2, removable), Accessory Tray, Over Molded Reading Rack/Tablet Holder, Heart Rate Strap
PHYSICAL SPECIFICATIONS	Footprint	45" L x 25" W x 54" H / 114.3 cm x 63.5 cm x 137.2 cm
	Machine Weight	122 lbs. / 56 kg
	Maximum User Weight	350 lbs. / 159 kg
	Step-Over Height	16.75" / 42.54 cm
	Portability	2 Front Transport Wheels
WARRANTY	Warranty Type	Residential
	Frame	25 Years
	Parts	10 Years
	Consoles	Touchscreens 3 Years / EMERGE LED 10 Years
	Labor	1 Year

CONSOLE OPTIONS

		16" TOUCHSCREEN	10" TOUCHSCREEN	EMERGE LED
CONNECTIVITY	Bluetooth Connectivity	•	•	
	Apps			
	Chest Strap Included	•	•	•
	FTMS App Compatible	•	•	•
	Wireless Heart Rate Monitoring	•	•	•
	3.5mm Headphone Jack	•	•	
	Reading Rack/ Tablet Holder	•	•	•
	Workouts			
	Quick Start Classics (Goal, Hill, Random Level, Plateau, Constant Power) Vision Run (4 videos) Fitness Test Target HRC User Program Intervals (Classic, HIIT, Custom)	•	•	
	Manual, Hill Intervals, Rolling Hills, Half Marathon, Target HRC, Cardio Challenge, Walk and Run Intervals, Speed Ramp, 5K, 10K, Saved Workouts - if activated			•
Saved Workouts	Console saves last ten (10) workouts and can accommodate up to ten (10) user profiles	•	•	
	Ten (10) user profiles with up to six (6) saved workouts - if activated	•	•	
	Touchscreen	•	•	
SERVICE	Software Update Via WiFi	•	•	
	Self Diagnostics	•	•	
POWER CONSERVATION	Sleep Mode	•	•	•
	Standard			



16" TOUCHSCREEN

- 16" HD Touchscreen
- User-friendly tabs, connectivity, and built in workouts
- Up to ten (10) user profiles



10" TOUCHSCREEN

- 10" HD Touchscreen
- User-friendly tabs, connectivity, and built in workouts
- Up to ten (10) user profiles



EMERGE LED

- Quick keys, connectivity, and challenging programs

Warranties outside the U.S. and Canada may vary - Please contact your dealer for details. Specifications subject to change without notice.

*The stated "Horsepower"/ "continuous Horsepower" (HP/CHP) is a standard reference in the treadmill market, primarily used to aid consumers in making comparisons. This CHP rating is ascertained via lab-based dynamometer tests, which evaluate the mechanical prowess of the motor. Its important to note, however, that the CHP rating is not reflective of the treadmill's working horsepower in a regular home setting. In everyday domestic use, the motor's horsepower doesn't correspond to the CHP value displayed.

